



## Customize Your Event With These Picnic Favorites!

### On The Side

Fried Chicken Tenders . . . . .	\$2.50pp	French Fries . . . . .	\$2.00pp
Fried Veggies . . . . .	\$2.00pp	Macaroni & Cheese . . . . .	\$2.25pp

### Desserts

Novelty Ice Cream Bars . . . . .	\$1.25pp	Funnel Cakes . . . . .	\$2.75pp
Italian Ice Cart (3 Flavors) . . . . .	\$2.50pp	Fresh Baked Brownies . . . . .	\$2.00pp

### Entertainment

- ☞ Magician or Clown - \$250 and up per hour (minimum 2 hours)
- ☞ Temporary Tattoo Artist - \$100 per hour (minimum 2 hours)
- ☞ Face Painter - \$150 per hour (minimum 2 hours)
- ☞ Disc Jockey - \$300 (4 hrs)
- ☞ Sound System - \$75 (4 hrs) with wireless microphone and iPod inputs.

### Activities

- ☞ 30' Rock Climbing Wall - \$300 (4 hours)
- ☞ Pony Rides - \$500 (2 hours)
- ☞ Petting Zoo - \$895 (3 hours)
- ☞ Dunk Tank - \$200 (4 hours)
- ☞ Bungee Trampoline - \$2500 (4 hours)
- ☞ Dance Dance Revolution - \$100 (4 hours)
- ☞ Fun Games & Wacky Relays - \$100 per hr. (min 2 hours)
- ☞ Sand Art, Sand Candy, or Spin Art - \$125 (per 25 attendees)
- ☞ Inflatables, over 40 to choose from! - call for details
- ☞ School Carnival - \$1200 (4 hours plus cost of prizes) includes moon bounce and 2 fun foods!



**Speak to our Catering  
Director for more options!**



## Eagle River Picnics 2012 School Picnic Planner

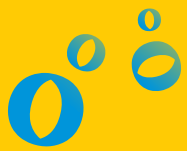


## Central Jersey's Premier Picnic Site!

Eagle River Picnics @  
Eagle River Day Camp  
1470 Perrineville Road  
Monroe Township  
New Jersey 08831

(609) 448-5885  
EagleRiverDayCamp.com





# Our All-Inclusive Package!

# Eagle River Picnics

## What's Included in your school event?

- ◆ **Private EXCLUSIVE use of the facilities at no charge.**  
Be secure in knowing that are the only group onsite!
- ◆ Professional staff to greet your students, staff & volunteers
- ◆ Professionally groomed softball field with bats, balls and safety equipment (please bring your own gloves)
- ◆ Soccer field with equipment, hiking trails
- ◆ Basketball, beach volleyball, tetherball, ga-ga
- ◆ Ping pong, frisbees, jump rope, kick ball
- ◆ Awesome playground for the kids
- ◆ Covered dining area and plenty of natural shade
- ◆ Changing rooms and clean bathrooms
- ◆ 4-hour facility rental
- ◆ Full-service buffet and wait staff
- ◆ Variety of menu packages to choose from
- ◆ Real family atmosphere
- ◆ Event is professionally supervised



*School events are hosted Monday through Friday during May, June and September.*



## Our famous, "all-you-can-eat" All-American School Menu

4 hours of beverage service and 1 hour of all-you-can-eat BBQ!

### Hot Off The Grill:

- All-Beef Quarter Pound Hamburgers and Cheeseburgers
- Grilled Garden Veggie Burgers
- Hebrew National Kosher All-Beef Franks

### Super Sides:

- Potato Chips and Pretzels
- Pickles, Relish, Ketchup, Mustard, and Onions

### Yummy Dessert:

- Chilled Watermelon Slices

### Unlimited Beverages:

- Fresh Brewed Iced Tea
- Country Time Pink Lemonade
- Ice Water

2012 pricing: \$11.00 per adult  
\$9.00 per child (ages 3 - Grade 6)

For schools with a larger budget, speak with our Catering Director for additional options and amenities.

Aquatic Facilities are available at an additional \$300 charge:

- ☞ Beautiful lake with sand beach and 25 ft. water trampoline.
- ☞ Paddle boats and kayaks for boating on the lake.
- ☞ Olympic-length pools and kiddie pool.
- ☞ Certified lifeguards to oversee lake and pool activities.



# Eagle River Picnics Team Challenge For Schools

## *Fun and Exciting*

You've had a school picnic before, and this year you need to add something new to complement the existing curriculum. Engage your students and staff in a Team Building Program designed specifically for your group. This year, dare to go beyond the same ordinary picnic. Let Eagle River design an event that will make your school's day memorable while developing friendships and bonds that will last long after your students leave. Create a special day that everyone will rave about!

### **Our famous "all-you-can-eat" Team Challenge Picnic**

#### **Fresh and hot off the grill:**

All-Beef ¼ lb. Hamburgers and Cheese Burgers  
Grilled Garden Veggie Burgers

#### **Super Sides:**

Potato Chips and Pretzels  
Pickles, Relish, Ketchup, Mustard & Onions

#### **Desserts:**

Chilled Watermelon Slices  
Novelty Ice Cream Cart

#### **Beverages:**

Fresh Brewed Iced Tea  
Country Time Pink Lemonade  
Ice Water

#### **Fresh from the Team Challenge Planner:**

Our Team Challenge Specialists are experts at developing unique team building programs. We work to establish cooperation, compatibility and unity throughout your group. Our Picnic Staff will ensure that your Team Challenge Picnic is a complete success. ***Everything from a delicious menu to music, activities and awards is included.***

Our Picnic Coordinator will partner with you to create team building games and tournaments specific for your age group. Once all the students have arrived you will be divided into teams. Each team will engage in an activity and compete through both active and passive tasks. Everyone will be involved taking into consideration proficiency and limitations of each individual. Food will be all-you-can-eat and available for one hour.

Our DJ and Emcee will keep your event moving with non-stop interactive entertainment. In addition, our Professional Games Hosts will work with your teams to help facilitate each event. Everything from climbing the rock wall to a water balloon toss will be included. We have dozens of competitions to keep your kids active and involved.

After all the teams have competed and scores tallied, we end the picnic with a banner and cheer competition. An awards ceremony tops off an amazing day that will keep your students talking for months!

#### **CABC1f...ztz€xK**

50-100 students: \$23.00 pp / \$11.00 per adult (food only)  
101-150 students: \$19.00 pp / \$11.00 per adult (food only)  
151-200 students: \$18.00 pp / \$11.00 per adult (food only)  
200-250 students: \$17.00 pp / \$11.00 per adult (food only)  
251+ students: \$16.00 pp / \$11.00 per adult (food only)